

MARIABERG E.V.



THE HUMAN TOUCH

MARIABERG



Von Mensch zu Mensch

MARIABERG E.V.

Mariaberg e.V. is a Diaconal Social Service institution with an offering that is available to people of all age groups, from early childhood to advanced age, who suffer from disabilities and social deprivation. The institution was founded in 1847 by Dr Carl-Heinrich Rösch, a public health officer from Urach. With a staff of more than 1,700 we take care of some 3,000 people in our region. Our institution is headquartered in Gammertingen. In the course of regionalisation in recent years additional facilities and new offerings have been created in the administrative districts of Sigmaringen, Reutlingen, Zollernalb, Alb-Donau, Biberach as well as in Stuttgart and Ulm. In-house assisted living in particular has been relocated to this region. Together with its subsidiaries, Mariaberg offers a wide range of support extending from in-house and externally assisted living, schooling and vocational education through to employment in workshops as well as offerings tailored to the needs of disabled senior citizens. Mariaberg offers assistance and a nurturing environment to people irrespective of the severity of their disability.

Specialisation in certain fields is one of the hallmarks of Mariaberg. Included are a hospital specialising in child and adolescent psychiatry, a medical therapy centre for people with disabilities and offerings in the areas of youth welfare and pre-school services. In addition, Mariaberg as an educational institution assists in integrating various target groups in the working world through educational activities and special vocational training programmes and vocational schools. In numerous communities of the region we are entrusted with open youth work. In addition, we organise a wide range of cultural and recreational events.

Mariaberg e.V. is headed by a full-time management board whose members jointly conduct the organisation's business but whose responsibilities are focused on various areas. The management board is appointed and overseen by the Mariaberg board of directors which is elected by the general assembly. The members of the board of directors and the general assembly serve as unsalaried volunteers.





Extract from the principles that guide Mariaberg e.V.:

OUR CONCEPT OF HUMANITY

According to our basic Christian belief, every human being has been created by God and is loved by God. Human life is unique, irreplaceable, non-disposable and in its diversity escapes any evaluation. Human dignity is inviolable. All of us are imperfect and dependent upon assistance, attention and forgiveness.

OUR DIACONAL MISSION

Our mission is to make it possible for the people who need our assistance to lead a life which corresponds to our concept of humanity. Therefore, our task is to accept and respect their uniqueness, to stand by their side and to support them in mastering the challenges of everyday life with the aim of participation and inclusion in society. The message of Christ provides us with the impetus and energy for our work. We appreciate the valuable contributions of all employees who respect and share these basic beliefs.

OUR TASKS

Our offering addresses people who need assistance within the scope of the diaconal mission we have defined for ourselves. Our work is centred on individuals who suffer from disabilities or social deprivation and incorporates the respective social environments relating to our various offerings.

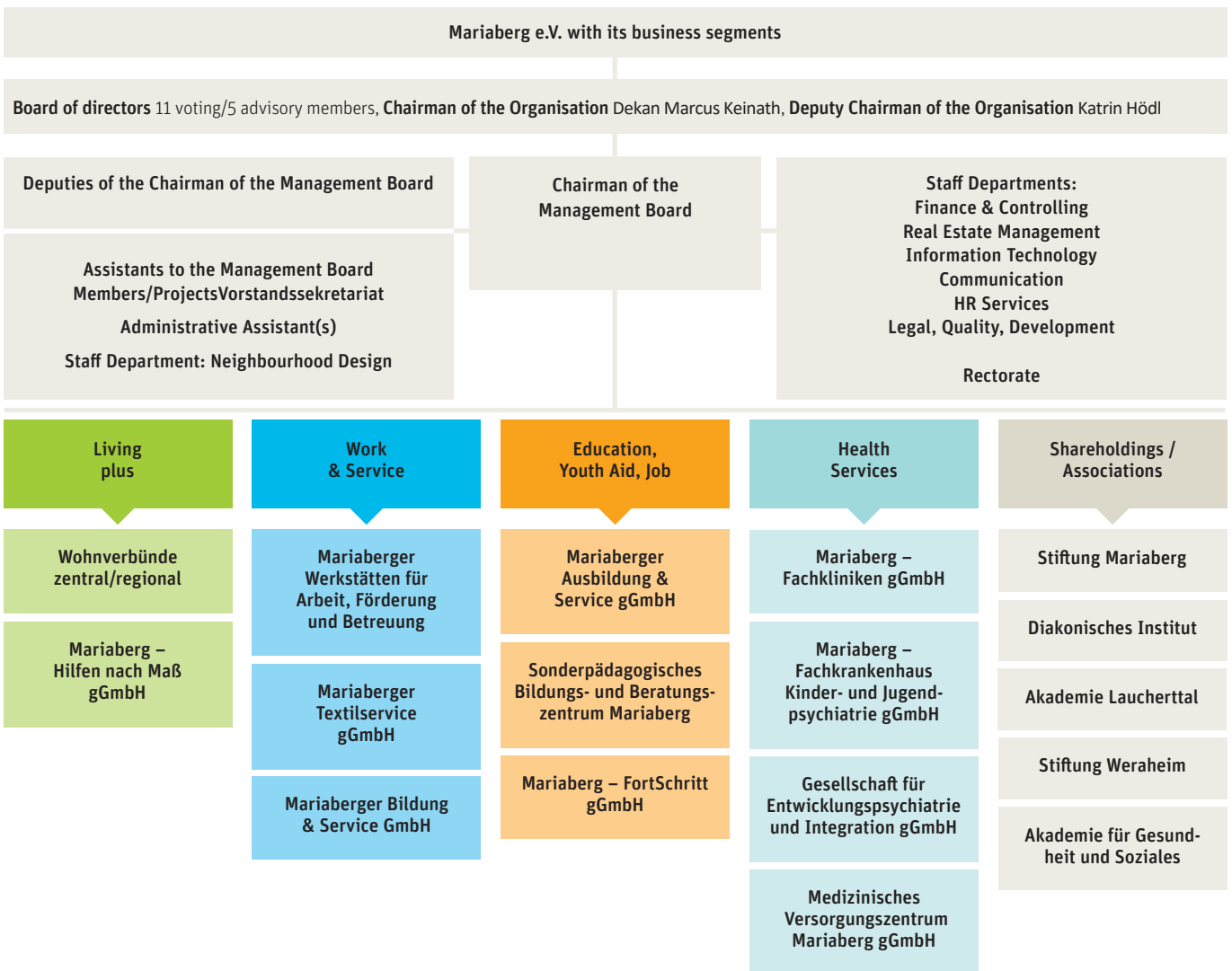
We influence the general conditions of our work through active socio-political engagement. People in social distress or in need of special assistance motivate us to continually develop the ways in which we provide aid and the services we offer. New requirements resulting from changes in laws or regulations prompt a need for action as well. To implement such actions, new concepts and appropriate models must be developed. All employees work together in a spirit of mutual trust in order to help us achieve our agreed objectives through the conscientious performance of tasks.

OUR QUALITY

We value professionally qualified work. The appropriate skills of our employees are a prerequisite for this. We assure these by selecting suitable staff and through continual training and advanced education. To consistently improve our quality, we rely on the ingenuity and commitment of every staff member in every role. In designing our work we take economic and environmental aspects into account. The quality of our work should be describable and assessable. We use this as the basis for developing a shared understanding and awareness of quality. We perform our work in accordance with our guidance principle 'The Human Touch'.



MARIABERG'S ORGANISATION



MARIABERG E.V.

Chairman of the Organisation and Board of Directors: Dekan Marcus Keinath
Chairman of the Management Board: Rüdiger Böhm, Michael Sachs

Wohnen Plus

Managing Director: Walter Märkle, Christine Scheel

Trégueuxplatz 1
72501 Gammertingen
Phone 07574 934 968 0
Fax 07574 934 968 22
E-Mail s.flad@mariaberg.de

In-house living offers for

- ➔ Children with disabilities
- ➔ Juveniles with disabilities
- ➔ Adults with disabilities
- ➔ Senioren mit Behinderung
- ➔ Senior citizens with disabilities
- ➔ Assisted living in families
- ➔ Specialised living for people with challenging behaviours
- ➔ Living combined with medical/nursing care

Mariaberg - Hilfen nach Maß gGmbH

Managing Director: Walter Märkle, Christine Scheel

Trégueuxplatz 1
72501 Gammertingen
Phone 07574 934 968 17
Fax 07574 934 968 22
E-Mail a.biechele@mariaberg.de

- ➔ Open assistance
- ➔ Family-relief assistance
- ➔ Holiday and recreational offerings/support

Mariabberger Werkstätten

Managing Director: Rainer Laske

Burghaldenstraße 1
72501 Gammertingen
Phone 07124 923 527
Fax 07124 923 200
E-Mail n.peter@mariaberg.de

- ➔ Workshop for people with disabilities (WfbM)
- ➔ Development and assistance
- ➔ Vocational education
- ➔ Industrial contract manufacturing
- ➔ Organic farming
- ➔ Factory
- ➔ Café fair & more
- ➔ Textile and book market
- ➔ Collection point for material donations

Mariabberger Textilservice gGmbH

Managing Director: Rüdiger Böhm

Burghaldenstraße 1/1
72501 Gammertingen
Phone 07124 923 352
E-Mail s.mahler@mariaberg.de

Textile cleaning for

- ➔ Hotels and restaurants
- ➔ Companies
- ➔ Clinics
- ➔ Private clients

Mariabberger Bildung & Service GmbH

Managing Director: Judith Penning

Unterer Torackerweg 8
72501 Gammertingen
Phone 07124 923 7284
Fax 07124 923 597
E-Mail m.leis@mariaberg.de

- ➔ Supply of meals
- ➔ Meals for schools
- ➔ Catering
- ➔ Domestic services
- ➔ Landscape gardening
- ➔ Carpentry
- ➔ Electrical shop
- ➔ HVAC
- ➔ Painters' shop
- ➔ Gardening and flower shops
- ➔ Janitorial services
- ➔ Gastronomy offerings
- ➔ Shuttle service
- ➔ Vocational training
- ➔ Carl-Heinrich-Rösch-Gästehaus



Mariaberg Ausbildung & Service gGmbH
Managing Director: Heiko Stopper

Unterer Torackerweg 8
72501 Gammertingen
Tel 07124 923 627, Fax 07124 923 403
E-Mail m.biedermann@mariaberg.de

- Integrative kindergarten and nursery in Mariaberg
- Integrative kindergarten and nursery
- Open and Mobile youth work
- School social work
- Social group work
- Diverse forms and specialisations of in-house youth aid
- Assisted living for youths
- Reha-Ausbildung in 16 Ausbildungsberufen
- Workshops for metalworking and precision finishing
- Preparatory vocational education programmes
- Educational offerings for (young) adults
- Social security and trade association activities
- Vocational schools

Sonderpädagogisches Bildungs- und Beratungszentrum
Headmaster: Alexander Märkle

Oberer Torackerweg 2
72501 Gammertingen
Phone 07124 923 311, Fax 07124 923 596
E-Mail sbbz@mariaberg.de

- School for social and emotional development/learning
- School for mental development
- School for physical development
- School for pupils in prolonged hospitalisation
- Collaborative organisational forms in the region

Mariaberg – Fortschritt gGmbH
Managing Director: Christine Filius, Bernd Zimmermann

Friedrichsau 2, 89073 Ulm
Phone 0731 927 4882, Fax 0731 927 4795
E-Mail fortschritt-ulm@t-online.de

- Special educational institution for pre-school and school children
- Conductive nurturing

Mariaberg – Fachkliniken gGmbH
Director: Dr. Martin Menzel, Rüdiger Böhm

Burghaldenstraße 12
72501 Gammertingen
Phone 07124 923 7201
Fax 07124 923 555
E-Mail u.schrade@mariaberg.de

- Therapeutic offices
- Interdisciplinary early development

Mariaberg – Fachkrankenhaus Kinder- und Jugendpsychiatrie gGmbH

Director: Rüdiger Böhm, Dr. Martin Menzel, Chefarzt

Burghaldenstraße 12
72501 Gammertingen
Phone 07124 923 7201
Fax 07124 923 555
E-Mail klinik@kjp-mariaberg.de

- In-patient facilities
- Psychiatric outpatient facilities
- Day clinic Albstadt

Medizinisches Versorgungszentrum Mariaberg gGmbH

Managing Director: Dr. Martin Menzel, Rüdiger Böhm

Burghaldenstraße 6
72501 Gammertingen
Phone 07124 923 9000
Fax 07124 923 556
E-Mail mvz@mariaberg.de

- General practitioner's office
- Psychiatric office
- Psychotherapy office
- Children and youth psychiatry office

Gesellschaft für Entwicklungspsychiatrie und Integration gGmbH

Managing Director: Sebastian Schlaich, Dr. Martin Menzel, Chefarzt

Bernsteinstraße 108-112
70619 Stuttgart
Phone 0711 63 34 49 0
Fax 0711 63 34 49 10
E-Mail klinik@kjp-bernsteinstrasse.de

- Day clinic Bernsteinstraße



MARIABERG IN THE REGION



Mariaberg

Central administration and staff offices
 Business Segment Work & Service
 Business Segment Education, Youth Aid, Jobs
 Business Segment Health Services
 Business Segment Living plus
 Health and Family Centre
 Mariaberger Textilservice gGmbH
 Mariaberger Bildung & Service GmbH
 Diaconal Institute for Social Professions
 Mariaberger Sonderpädagogisches Bildungs- und Beratungszentrum (SBBZ)
 Mariaberger Ausbildung & Service gGmbH

Gammertingen

Residential facility, youth aid
 Residential groups and community living
 Language assistance
 Café fair & mehr + world shop
 Gardening centre and flower shop
 Youth Office Gammertingen
 Community-integrated living
 School social work
 SBBZ and BVE field office
 Mariaberg - Hilfen nach Maß gGmbH

Sigmaringen

Youth work
 Special vocational educational school field office
 House of Social Services
 Occupational therapy office
 Disability counselling for families
 Mariaberg – Hilfen nach Maß gGmbH
 Interdisciplinary early intervention
 Integrated living
 Residential groups
 Preparatory vocational education (BvB)
 Integrative educational and industrial park
 Integrative educational and industrial park
 Psychiatric therapy branch office

Mariaberg e.V.
Klosterhof 1
72501 Gammertingen
Phone 07124/923-218
Fax 07124/923-409
presse@mariaberg.de
www.mariaberg.de

Thank you for your support
Bank account number 112 503
Kreissparkasse Reutlingen
BLZ: 640 500 00
IBAN: DE82 6405 0000 0000 1125 03
BIC: SOLADES1REU



MARIABERG



Von Mensch zu Mensch